

SOCIAL DISTANCING IN SCHOOL GROUNDS

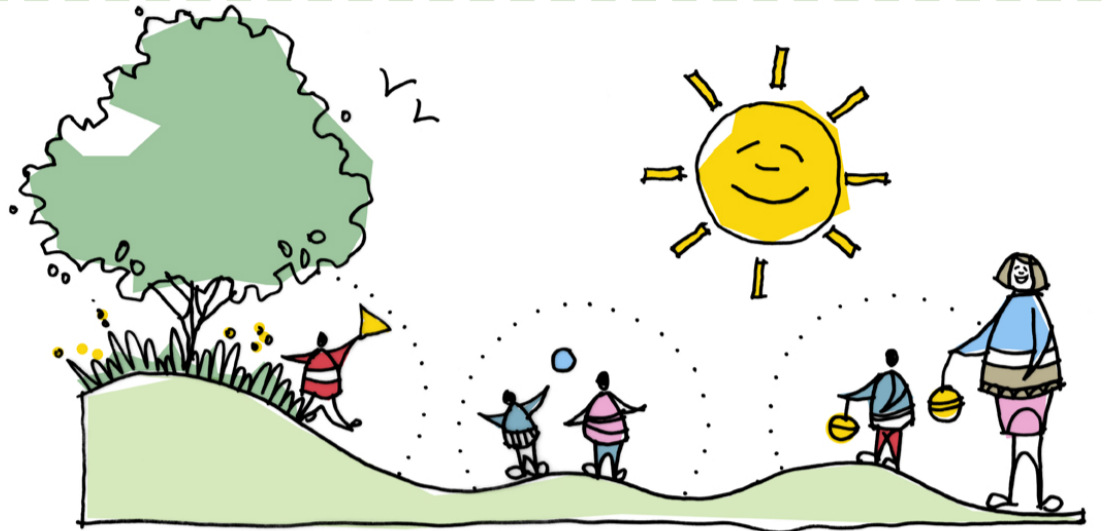
- Current Government guidance recognises social distancing in schools will be difficult to achieve. This poster provides ideas for potential solutions to help mitigate some of the constraints.
- It should be noted that some of the suggestions described will not be suitable or achievable for all schools. Guidance should be read in conjunction with information issued by the Government, National Health and Education experts to ensure the most appropriate measures are adopted or trialled to ensure effectiveness.

- Government guidance also suggests that early years and primary age children cannot be expected to remain 2m apart from each other and staff.
- Consideration should be given to dividing younger pupils into small groups who work together, play together and stay away from other groups of pupils. In this way they are limiting contact with a wider number of children as well as adults.
- Our architects are also developing tools to help schools with internal re-organisation (please request further details if required).

Why take learning outside?!

1. Being outdoors presents a significantly lower chance of Covid 19 transmission (Prof. Jonathan Tam, Dept. Medical Officer, England, 2020)
2. Outdoor learning positively affects:
For further information see: <https://www.ltl.org.uk/evidence/>

- A.** Pupil and educators health and psychological wellbeing
- B.** Learning and attainment
- C.** Cognitive, personal, emotional and social development
- D.** Physical activity
- E.** Creativity, attention and focus
- F.** Student-centric learning, i.e. taking theory into the 'real world'
- G.** Connection to the natural world

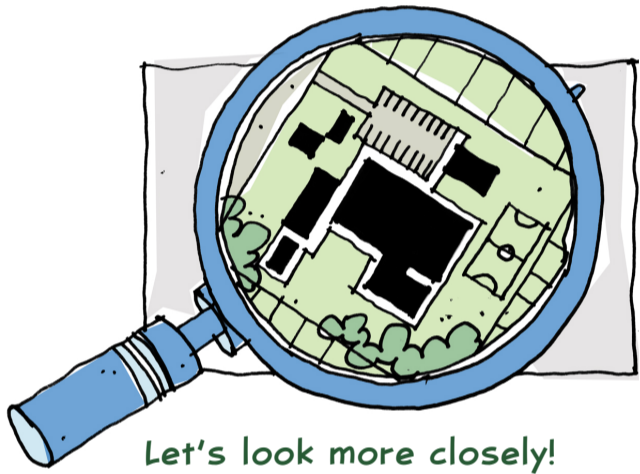


Kids love the outdoors!

How to make the most of the site?

Things to consider:

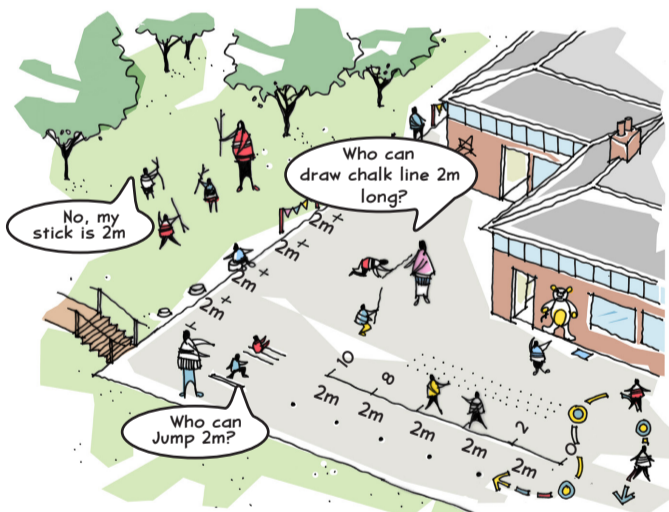
- Audit school grounds to identify 'all' usable spaces including nooks and crannies
- Unused areas could make great supervised, self-contained, group zones
- Consider disturbance of inside occupied rooms
- Maximise use of hardstandings, i.e. time tabled vehicular movements / strategic use of parking areas
- Use playing fields for more than just sport
- Scope for new surfacing to increase all-weather access



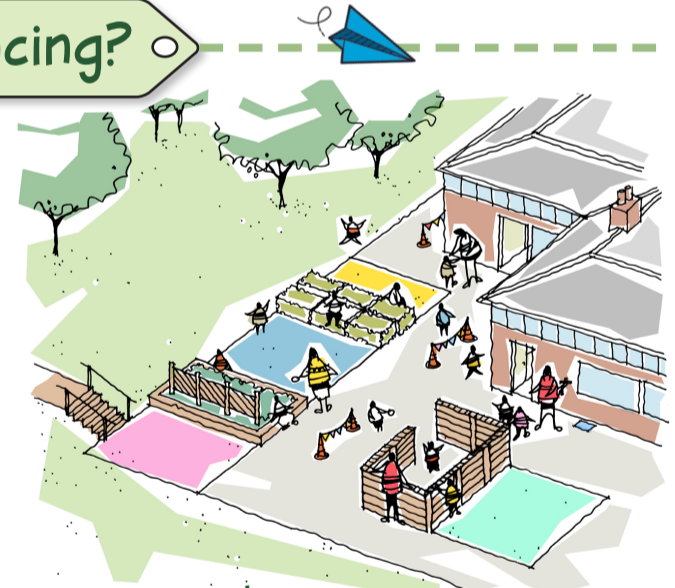
How to maintain social distancing?

Things to consider:

- Develop routines and understanding of what 2m looks like
- Barriers don't have to be boring! Think bunting, fun shapes and patterns
- Floor markings can teach counting, as well as spacing
- Remove / relocate obstacles if they reduce width to less than 2m



What does 2m look like?

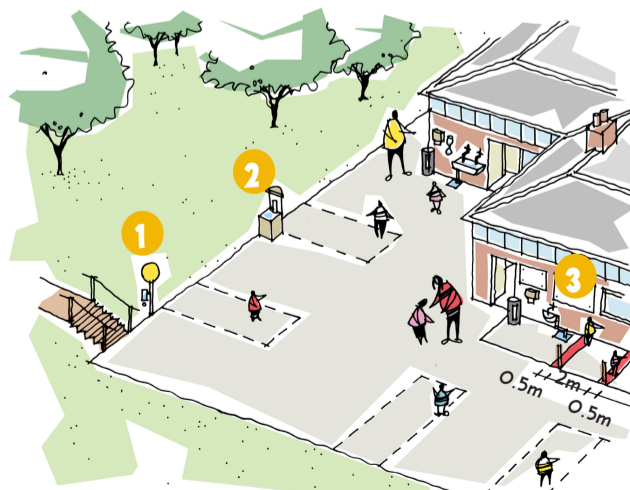


Separating elements

Hygiene tips

Things to consider:

- Provide methods of hand washing / sanitizing in each 'group zone' and entrances / exits
- Sanitizer / washing at anticipated contact points, i.e. handrails
- Introduce sinks and drainage, not just taps, to avoid puddles
- Hand drying: paper towels require waste bins
- Encouraging 2 minute washing! - Egg timer / sing Happy Birthday x2
- Clear / pictorial signage reiterating washing and hygiene behaviours
- 2m queuing to wash / sanitize facilities
- Cordon off equipment / zones and sanitize between groups
- Comply with plumbing standards



Keeping clean

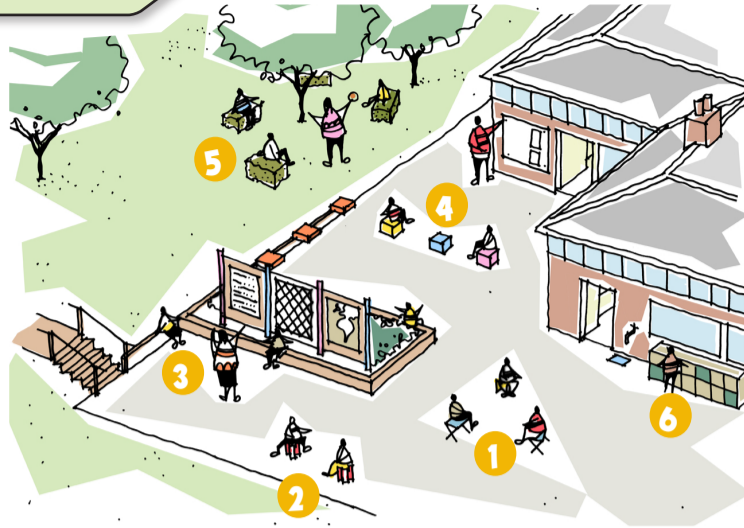
- 1 Clean hands
- 2 Portable wash station
- 3 Catch it, Kill it, Bin it

SOCIAL DISTANCING IN SCHOOL GROUNDS

Temporary gathering / seating spaces

Things to consider:

- Storage for pupil / educator resource packs
- Permanent fixed seating or individual moveable seats
- Inclusivity and disabled users
- Sun versus shade
- Ease of cleaning in terms of materials
- Teaching aids, i.e. chalkboard / chalk paint, white board, space to hang pictures / presentations etc
- Automatic 2m spacing between seats
- 2m queuing to wash / sanitize facilities
- Removal / relocation / cordoning off multi-user seating to encourage a large than 2m gap



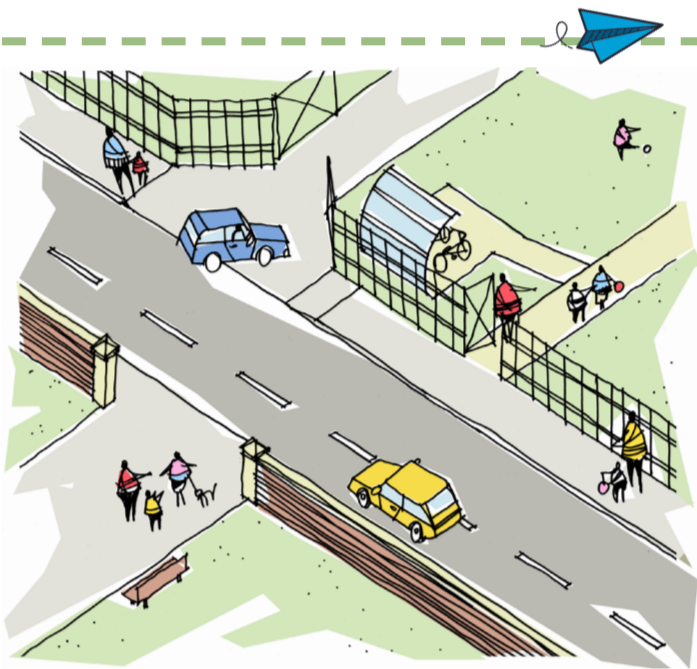
Seating ideas

- 1 Folding camp seat
- 2 Ecobrick seat
- 3 Clip on seat
- 4 Gabion square seat with timber/plastic top
- 5 Hay bale
- 6 Resource storage

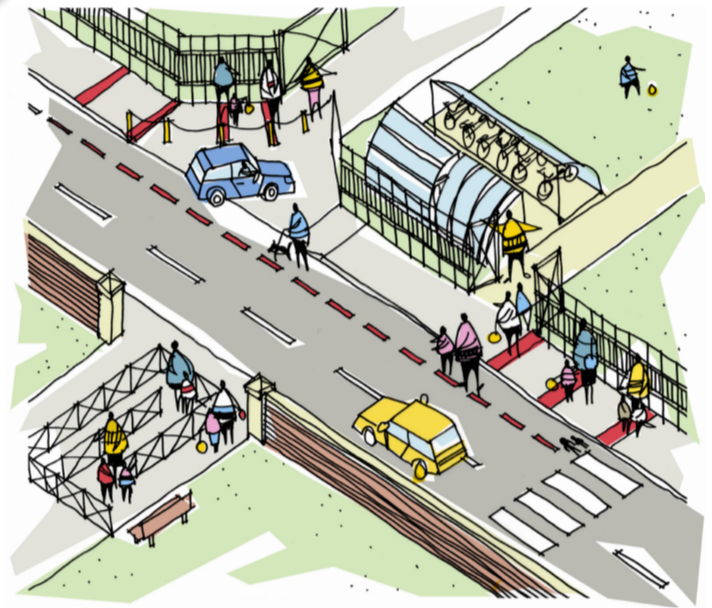
Pupil drop off / pick up

Things to consider:

- Anticipated queue length / location
- Discussions with local authority / neighbours re. queuing off site and to avoid blocking pavements
- Conversations / agreements regarding speed limits, crossing points, widened footpath demarcation for non school users
- Revisions to the secure line
- Timetabling vehicular movements to allow pedestrian access through wider entrances
- One way systems (pedestrian / vehicular)
- Additional cycle / scooter parking (reduced public transport)



Current access components

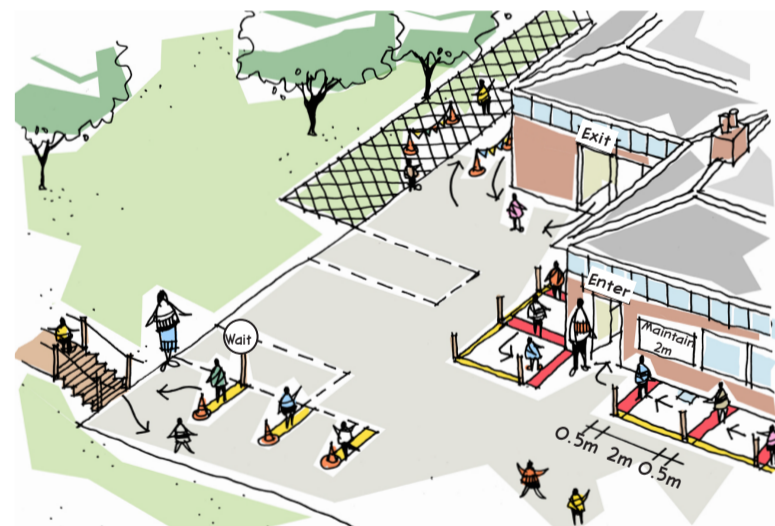


Potential access components

Moving around site

Things to consider:

- One way systems in / out of buildings i.e. keep left and walk clockwise
- Clear signage
- Widening footpaths with suitable, accessible, temporary surfacing
- Pinch points and 2m distancing - floor signage, wall / post signage and / or barriers
- Route planning / timetabling movements
- Provide sensory and physical variety in each group zone
- Positioning staff to monitor / control
- Introducing new external access to reduce pressure on internal corridors



New circulation solution

Outside come rain or shine!

Things to consider:

- Security i.e. access to roof
- Security i.e. climb into / out of site
- Structural attachment / loading
- Rain or shade
- Internal shading
- Surfacing types
- Planning permission (max. 2.5m tall within 2m of boundary)



Temporary measures



Permanent measures